

# ProMax®



### DIRECT VENT

#### DIRECT VENT DESIGN

- One-pipe, dual-channel closed system draws all make-up air from outside the home, eliminating problems caused by insufficient indoor ventilation and is FVIR compliant. Horizontal air intake and venting on all models up to 80 inches from outside wall with no electrical power needed.

#### INTELLIGENT CONTROL LOGIC

- The internal microprocessor provides enhanced operating parameters and tighter differentials for precise sensing and faster heating response to optimize performance.
- Uses a thermopile to generate the power needed to operate the electronic gas control without requiring an external power source.
- The electronic gas control incorporates an LED status indicator that monitors system operation and service diagnostics.

#### GREEN CHOICE® GAS BURNER

- Patented eco-friendly design reduces NOx emissions up to 33% and complies with low emissions of less than 40 ng/l.

#### DYNACLEAN™ DIFFUSER DIP TUBE

- Helps reduce lime and sediment buildup and maximizes hot water output. Made from long-lasting PEX cross-linked polymer.

#### COREGARD™ ANODE ROD

- Our anode rods have a stainless steel core that extends the life of the anode rod allowing superior tank protection far longer than standard anode rods.

#### PUSH BUTTON PIEZO IGNITOR

- Makes lighting pilot fast and easy with one hand push button spark ignition.

#### HEAT TRAP NIPPLES

- Factory-installed for faster installation

#### ENHANCED FLOW BRASS DRAIN VALVE

- Our residential water heaters have a solid brass, tamper resistant, enhanced flow, ball type, drain valve.
- Uses a standard female hose fitting that allows for fast and easy draining during maintenance.
- Designed for easy operation, this valve includes an integral screwdriver slot that features a ¼ turn (open/close) radius, which not only permits full straight-through water flow but also a quick and positive shut off.

#### CSA CERTIFIED AND ASME RATED T&P RELIEF VALVE

#### CODE COMPLIANCE

- Meets UBC, CEC and HUD National Codes.
- Meets the thermal efficiency and standby loss requirements of the U.S. Department of Energy and current edition of ASHRAE/IESNA 90.1
- Complies with the Federal Energy Conservation Standards effective April 16, 2015, in accordance with the Energy Policy and Conservation Act (EPCA), as amended.

#### DESIGN-LISTED BY CSA INTERNATIONAL

- Certified at 300 PSI test pressure and 150 PSI working pressure. Listed according to ANSI Z21.10.1-CSA 4.1 standards governing storage tank-type water heaters.

#### 6-YEAR LIMITED TANK AND PARTS WARRANTY

- For complete information, consult written warranty or A. O. Smith.



Model Number	Series	Gallon Capacity	First Hour Rating Gallon	Energy Factor	Input BTU Per Hour	Recovery 90°F Rise Gallon Per Hour	Dimensions in Inches								Vent Outlet	Approx. Shipping Weight (lbs)
							A	B	C	D	E	F	G	H		
GDV-40	300	40	72	0.63	38,000	41	64	49-3/4	22	13-1/4	15-1/4	42-1/2	29	15-1/4	Co-Axial	178
GDV-50	300	50	91	0.62	40,000	43	73	59	22	13-1/4	15-1/4	51-3/4	29	15-1/4	Co-Axial	200
GDVT-50	300	50	92	0.61	47,000	51	74	60	22	13-1/4	15-1/4	52-3/4	29	15-1/4	Co-Axial	215

Recovery capacities based on actual performance tests.

\*Dual-channel system has 3" vent pipe inside 6" air intake pipe, for the 40 and 50-gallon models. All models have 2" foam cavity.

Water connection is 3/4" male on all models. 40 and 50 gallon models are 8" on center.

All models are available in propane (LP) gas (series 301).

All models are certified from sea level to 7,700 ft. elevation.

Side connections optional. Add "L" to the model number, example GDV-40L

Side T&P standard on all models.

Dimensions and specifications subject to change without notice in accordance with our policy of continuous product improvement.

### IMPORTANT! Vent Installation and Termination Requirements

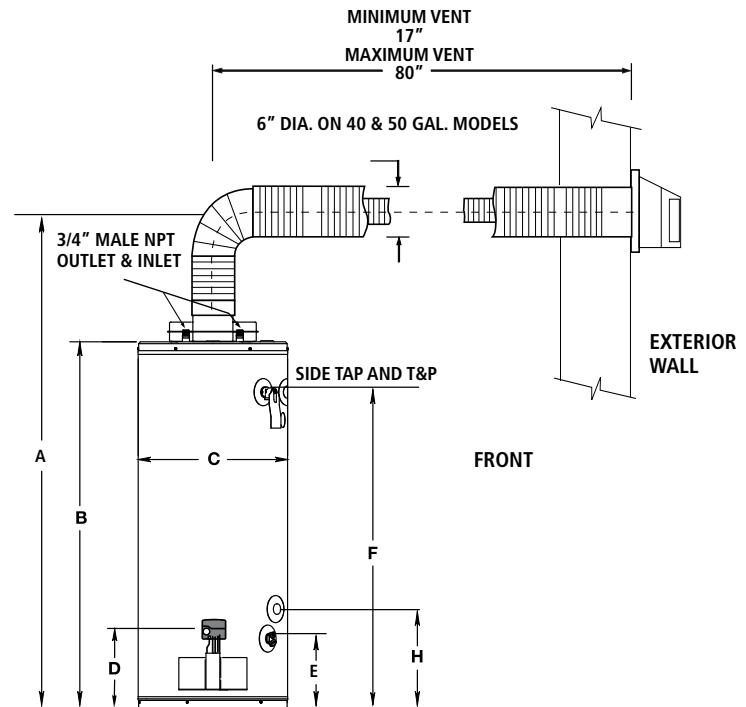
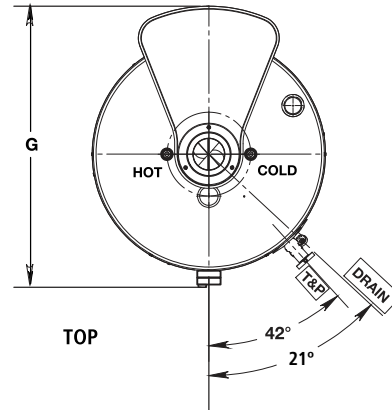
- Maximum horizontal vent distance is 80" to the outside of exterior wall.
- Maximum vertical vent distance is 72" above heater before 90 degree turn through exterior wall.
- Minimum horizontal vent distance is 17" to outside of exterior wall.
- Vent pipes may be trimmed (cut) for short vent installations.
- The recommended installation height for the vent termination is dimension "A" in the above table. The minimum allowable height (center line of termination opening) is 60 3/4" for the 40-gallon model, 69 1/2" for the 50-gallon 40,000 BTU input model, 70 1/2" for the 50-gallon model, 47,000 BTU input model.

### Vent Restrictor Plate:

- The vent restrictor plate is required for short horizontal vent runs less than 30" horizontal and for vent runs when the termination's height is greater than 48" above the heater. The only time the restrictor is not required is for horizontal runs greater than 30" in length with the termination less (lower) than 48" above the heater. See installation instructions for complete details.

### Offset Vent Arrangement:

- The vent run may have one (1) 90 degree horizontal turn prior to terminating through the exterior wall. See installation instructions for complete details.
- Vent termination clearance hole through the exterior wall should be approximately 7" diameter.
- Snow accumulation and drifting should be considered when locating the termination.
- An optional wire grill vent cap protector is available through the parts department (part number 9006627005).
- See the installation manual for complete installation and venting requirements.



# ProMax®



### ATMOSPHERIC VENT

#### INTELLIGENT CONTROL LOGIC

- The internal microprocessor provides enhanced operating parameters and tighter differentials for precise sensing and faster heating response to optimize performance.
- Uses a thermopile to generate the power needed to operate the electronic gas control without requiring an external power source.
- The electronic gas control incorporates an LED status indicator that monitors system operation and service diagnostics.
- \*Not available on 60,000 BTU input models (GCRX-50 and GCRX-55).

#### GREEN CHOICE® GAS BURNER

- Patented eco-friendly burner design reduces NOx emissions by up to 33% and complies with Low-NOx emission requirements of less than 40 ng/J.

#### DYNACLEAN™ DIFFUSER DIP TUBE

- Reduces lime and sediment buildup and maximizes hot water output. Made from long-lasting PEX cross-linked polymer.

#### COREGARD™ ANODE ROD

- Our anode rods have a stainless steel core that extends the life of the anode rod allowing superior tank protection far longer than standard anode rods.

#### PUSH-BUTTON PIEZO IGNITOR

- Makes lighting the pilot fast and easy with one-hand push-button spark ignition.

#### HEAT TRAP NIPPLES

- Factory-installed for faster installation.

#### BLUE DIAMOND® GLASS COATING

- Provides superior corrosion resistance compared to industry standard glass lining.

#### ENHANCED FLOW BRASS DRAIN VALVE

- Our residential water heaters have a solid brass, tamper resistant, enhanced flow, ball type, drain valve.
- Uses a standard female hose fitting that allows for fast and easy draining during maintenance.
- Designed for easy operation, this valve includes an integral screwdriver slot that features a 1/4 turn (open/close) radius, which not only permits full straight-through water flow but also a quick and positive shut off.

#### CODE COMPLIANCE

- Meets UBC, CEC and HUD National Codes.
- Meets the thermal efficiency and standby loss requirements of the U. S. Department of Energy and current edition of ASHRAE/IESNA 90.1.
- Complies with the Federal Energy Conservation Standards effective April 16, 2015, in accordance with the Energy Policy and Conservation Act, (EPCA), as amended.

#### HIGH ENERGY FACTORS

- Eco-Friendly non-CFC foam insulation, external heat traps and specially designed combustion chamber combine to produce a high Energy Factor for maximum savings on operating costs.

#### CSA CERTIFIED AND ASME RATED T&P RELIEF VALVE

#### MAXIMUM HYDROSTATIC WORKING PRESSURE 150 PSI

#### DESIGN-CERTIFIED BY CSA INTERNATIONAL

- Certified at 300 PSI test pressure and 150 PSI working pressure. Listed according to ANSI Z21.10.1-CSA 4.1 standards governing storage tank-type water heaters.

#### 6-YEAR LIMITED TANK AND PARTS WARRANTY

- For complete information, consult written warranty or A. O. Smith.



Model Number	Gallon Capacity	First Hour Rating Gallon	Energy Factor	BTU Input Natural Gas	BTU Input Propane Gas	Recovery 90°F Rise Gallon Per Hour	Dimensions in Inches								Draft Hood	Approx. Shipping Weight (lbs)
							A	B	C	D	E	F	*G	*H		
<b>TALL MODELS</b>																
†GCB-30	30	64	0.63	35,500	32,000	36	61-3/4	58	16	12-1/4	8	51-3/4	N/A	N/A	3 to 4 combo	132
GCR-30	30	67	0.63	35,500	32,000	36	61-3/4	58	18	12-1/4	8	51-3/4	N/A	N/A	3 to 4 combo	123
†GCB-40	40	70	0.62	40,000	36,000	41	62	58-1/4	18	12-1/4	8	52	N/A	N/A	3 to 4 combo	158
GCR-40*	40	70	0.62	40,000	36,000	41	62	58-1/4	20	12-1/4	8	52	14-1/4	51-3/4	3 to 4 combo	150
GCRH-40	40	67	0.62	35,500	N/A	36	62	58-1/4	20	12-1/4	8	52	N/A	N/A	3 to 4 combo	150
GCRT-40*	40	75	0.62	50,000	N/A	51	62	58-1/4	20	12-1/4	8	52	14-1/4	51-3/4	4	150
GCG-50*	50	88	0.60	40,000	37,000	41	60-3/4	57-1/4	21	12-1/4	8	50 1/2	14-1/4	50-1/2	3 to 4 combo	148
GCR-50*	50	88	0.62	40,000	37,000	41	60-3/4	57-1/4	22	12-1/4	8	50-1/2	14-1/4	50-1/2	3 to 4 combo	165
GCRT-50*	50	92	0.60	50,000	45,000	58	60-3/4	57-1/4	22	12-1/4	8	50-1/2	14-1/4	50-1/2	4	165
†GCRX-50*	50	98	0.60	60,000	54,000	61	65-1/2	61	22	13-1/2	8	54-1/4	14-1/4	50-1/4	4	190
GCRX-55*	55	103	0.59	60,000	54,000	61	60	55-1/2	24	13-1/2	8	48	14-1/4	48	4	189
<b>SHORT MODELS</b>																
†GCBL-30	30	62	0.63	35,500	32,000	36	50	46-1/4	18	12	8	40	N/A	N/A	3 to 4 combo	110
GCRL-30	30	64	0.63	35,500	32,000	36	50	46-1/4	20	12	8	40	N/A	N/A	3 to 4 combo	118
†GCBL-40	40	69	0.62	40,000	36,000	41	51-1/2	47-3/4	20	12	8	41-1/4	N/A	N/A	3 to 4 combo	134
GCRL-40	40	70	0.62	40,000	36,000	41	51-1/2	47-3/4	22	12	8	41-1/4	N/A	N/A	3 to 4 combo	135
GCRL-50	50	93	0.60	40,000	40,000	41	53	49-1/4	24	12	8	41-3/8	N/A	N/A	3 to 4 combo	177

Recovery capacities based on actual performance tests.

Water connection is 3/4" on all models

†Models ship with supplied insulation blanket.

For 10-year tank and 6-year parts warranty, change "G" to "X" in model number (example: XCR-30).

LP models not available on GCRH-40 and GCRT-40.

\*For optional side-mounted recirculating taps, add "L" to the suffix (example: GCR-40L).

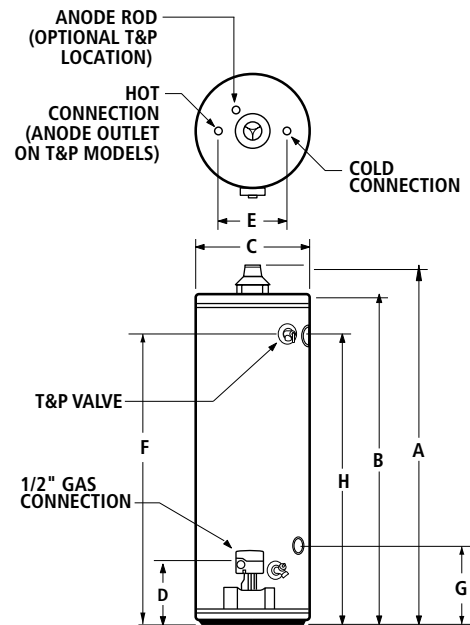
All models approved for installation from sea level to 10,100 ft. elevation.

Dimensions and specifications subject to change without notice in accordance with our policy of continuous product improvement.

### FLAMMABLE VAPOR IGNITION RESISTANT (FVIR) WATER HEATERS

A. O. Smith FVIR design meets the American National Standards Institute standards (ANSIZ21.10.1-CSA 4.1) that deal with the accidental or unintended ignition of flammable vapors, such as those emitted by gasoline.

Features a sealed combustion chamber with intake air filter and a flame arrestor built into the water heater base. In addition, a thermal cutoff (TCO) device, is designed to shut off gas flow to the burner and pilot if poor combustion is detected.



Maximum Hydrostatic Working Pressure: 150 PSI

# ProMax®



### ULTRA-LOW NO<sub>x</sub>

#### INTELLIGENT CONTROL LOGIC

- The internal microprocessor provides enhanced operating parameters and tighter differentials for precise sensing and faster heating response to optimize performance.
- Uses a thermopile to generate the power needed to operate the electronic gas control without requiring an external power source
- The electronic gas control incorporates an LED status indicator that monitors system operation & service diagnostics.

#### HIGH ENERGY FACTORS

- Eco-friendly non-CFC foam insulation, heat traps and specially designed combustion chamber combine to produce a high Energy Factor for maximum savings on operating costs.

#### GREEN CHOICE® GAS BURNER

- Enhanced Ultra-low NO<sub>x</sub> burner complies with SCAQMD Rule 1121 and other air quality management districts with similar requirements for NO<sub>x</sub> emissions of less than 10 ng/J.

#### DYNACLEAN™ DIFFUSER DIP TUBE

- Helps reduce lime and sediment buildup and maximizes hot water output. Made from long-lasting PEX cross-linked polymer.

#### COREGARD™ ANODE ROD

- Our anode rods have a stainless steel core that extends the life of the anode rod allowing superior tank protection far longer than standard anode rods.

#### PUSH-BUTTON PIEZO IGNITOR

- Makes lighting the pilot fast and easy with one-hand push-button spark ignition.

#### HEAT TRAP NIPPLES

- Factory-installed for faster installation

#### BLUE DIAMOND® GLASS COATING

- Provides superior corrosion resistance compared to industry standard glass lining.

#### ENHANCED FLOW BRASS DRAIN VALVE

- Our residential water heaters have a solid brass, tamper resistant, enhanced flow, ball type, drain valve.
- Uses a standard female hose fitting that allows for fast and easy draining during maintenance.
- Designed for easy operation, this valve includes an integral screwdriver slot that features a ¼ turn (open/close) radius, which not only permits full straight-through water flow but also a quick and positive shut off.

#### CODE COMPLIANCE

- Meets UBC, CEC and HUD National Codes.
- Meets the thermal efficiency and standby loss requirements of the U.S. Department of Energy and current edition of ASHRAE/IESNA 90.1.
- Complies with the Federal Energy Conservation Standards effective April 16, 2015, in accordance with the Energy Policy Conservation Act (EPCA), as amended.

#### CSA CERTIFIED AND ASME RATED T&P RELIEF VALVE

- Top-mounted T&P relief valve available as option.

#### DESIGN-LISTED BY CSA INTERNATIONAL

- Certified at 300 PSI test pressure and 150 PSI working pressure. Listed according to ANSI Z21.10.1-CSA 4.1 standards governing storage tank-type water heaters.

#### 6-YEAR LIMITED TANK AND PARTS WARRANTY

- For complete information, consult written warranty or A. O. Smith Corporation.



Model Number	Gallon Capacity	First Hour Rating Gallon	Energy Factor	BTU Input Natural Gas	Recovery @ 90°F Rise Gallon Per Hour	Dimensions in Inches									Draft Hood	Approx. Shipping Weight (lbs)
						A	B	C	D	E	F	G*	H*			
<b>TALL MODELS</b>																
GUC-30	30	55	0.63	33,000	34	61-3/4	58	16	12	8	51-3/4	N/A	N/A	3 to 4 combo	126	
†GUCB-40	40	71	0.62	40,000	41	58-1/4	58-1/4	18	12	8	52	N/A	N/A	3 to 4 combo	TBD	
GUR-40	40	71	0.62	40,000	41	62	58-1/4	20	12	8	52	N/A	N/A	3 to 4 combo	153	
GUC-50	50	TBD	0.60	40,000	42	60-3/4	57-1/4	20	12	8	50-1/2	N/A	N/A	3 to 4 combo	TBD	
GUR-50	50	TBD	0.62	40,000	42	60-3/4	57-1/4	22	12	8	50-1/2	N/A	N/A	3 to 4 combo	168	
GURT-50L*	50	98	0.60	50,000	51	64	60	22	12-1/4	8	53-1/4	12-1/4	53-1/4	4	177	
<b>SHORT MODELS</b>																
GURL-40	40	71	0.62	40,000	41	51-1/2	47-3/4	22	12	8	41-1/4	N/A	N/A	3 to 4 combo	138	

Recovery capacity based on actual performance tests.

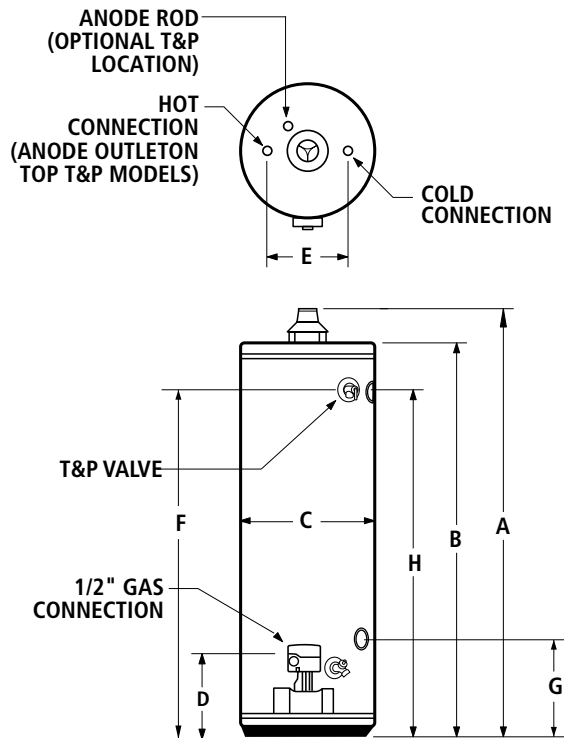
All models may be ordered from the factory with top T&P.

\*Standard with side recirculating taps (model GURT-50L).

†Models shipped with supplied insulation blanket.

All models approved for installation from sea level to 7,700 ft. elevation (except on GURT-50L, approved to 5,400 ft.).

Dimensions and specifications subject to change without notice in accordance with our policy of continuous product improvement.



Maximum Hydrostatic Working Pressure: 150 PSI

# ProMax®

## ATMOSPHERIC VENT 75 & 100 GALLON

### HIGHEST RECOVERIES

- Capacity/ input combinations up to 98 gallons/75, 100 BTU's produce recoveries up to 81 gallons per hour

### FULLY AUTOMATIC CONTROLS WITH SAFETY SHUTOFF

- Accurate, dependable control system requires no electric connections. Fixed automatic gas shutoff device for added safety.

### GREEN CHOICE® GAS BURNER

- Patented eco-friendly burner design reduces NOx emissions by up to 33% and complies with Low-NOx emission requirements of less than 40 ng/l.

### DYNACLEAN™ DIFFUSER DIP TUBE

- Reduces lime and sediment buildup and maximizes hot water output. Made from long-lasting PEX cross-linked polymer.

### COREGARD™ ANODE ROD

- Our anode rods have a stainless steel core that extends the life of the anode rod allowing superior tank protection far longer than standard anode rods.

### PUSH-BUTTON PIEZO IGNITOR

- Makes lighting the pilot fast and easy with one-hand push-button spark ignition (Natural gas only).

### NIPPLES

- Factory-installed for faster installation.

### BLUE DIAMOND® GLASS COATING

- Provides superior corrosion resistance compared to industry standard glass lining.

### ENHANCED FLOW BRASS DRAIN VALVE

- Our residential water heaters have a solid brass, tamper resistant, enhanced flow, ball type, drain valve.
- Uses a standard female hose fitting that allows for fast and easy draining during maintenance.
- Designed for easy operation, this valve includes an integral screwdriver slot that features a 1/4 turn (open/close) radius, which not only permits full straight-through water flow but also a quick and positive shut off

### CODE COMPLIANCE

- Meets UBC, CEC and ICC National Codes.
- Meets the thermal efficiency and standby loss requirements of the U.S. Department of Energy and current edition of ASHRAE/IESNA 90.1.

### CSA CERTIFIED AND ASME RATED T&P RELIEF VALVE

### MAXIMUM HYDROSTATIC WORKING PRESSURE 150 PSI

### DESIGN-LISTED BY UNDERWRITERS LABORATORIES

- Certified at 300 PSI test pressure and 150 PSI working pressure.
- Listed according to ANSI Z21.10.3 CSA 4.3 standards governing storage tank-type water heaters.

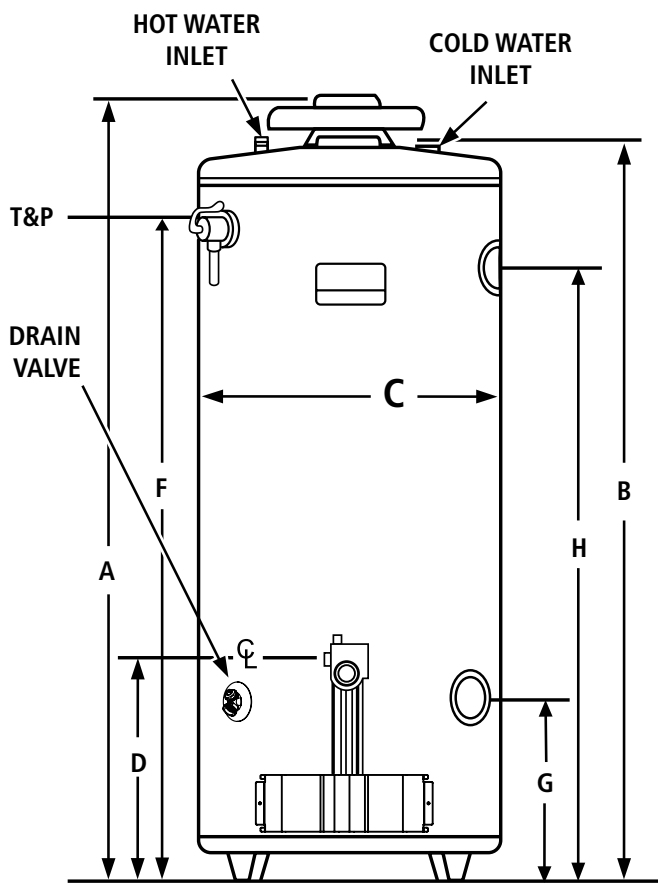
### 6-YEAR LIMITED TANK AND PARTS WARRANTY

- For complete information, consult written warranty or A. O. Smith..

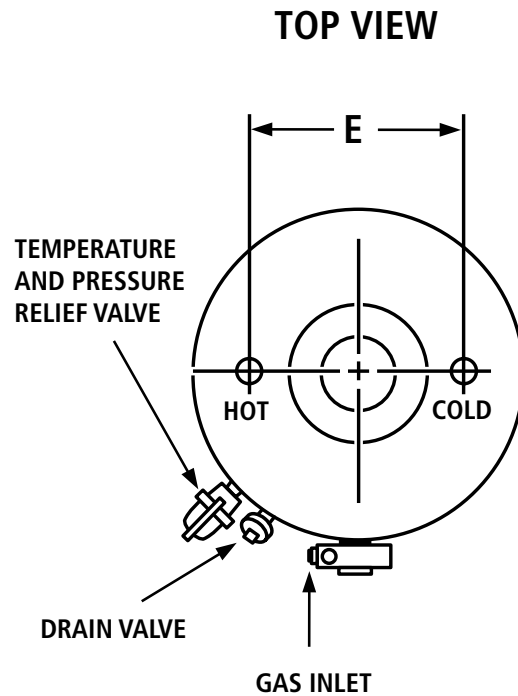


Model Number	Gallon Capacity	BTU Input Natural Gas	Recovery @ 90°F Rise Gallon Per Hour	Dimensions in Inches									Draft Hood	Approx. Shipping Weight (lbs)
				A	B	C	D	E	F	G	H			
FCG-75	74	75,100	81	61	58-1/2	26-1/2	15-3/16	16	50-1/4	15-1/2	50-1/4	4	275	
FCG-100	98	75,100	81	68-1/2	66-1/2	27-3/4	15-3/16	16	57-3/8	N/A	N/A	4	350	

Recovery capacity are based on actual performance tests.  
 Water connections - 1" on FCG-75 and 1-1/4" on FCG-100.  
 For 10-year tank and 6-year parts warranty, change "F" to "P" in model number (example: PCG-75).  
 For optional side-mounted recirculating taps, add "L" to the suffix (example: FCG-75L).  
 Dimensions and specifications subject to change without notice in accordance with our policy of continuous product improvement.



**FRONT VIEW**



**TOP VIEW**



# ProMax®



## ULTRA-LOW NOx DIRECT VENT

### FLAMMABLE VAPOR RESISTANT/ DIRECT VENT SEALED COMBUSTION SYSTEM

- Thru-the-wall/thru-the-roof venting of combustion products.
- Air for combustion is drawn from outside the building.

### DURABLE, ULTRA-LOW NOx BURNER CONSTRUCTION

### NON-CFC FOAM INSULATION

- The tank is surrounded by a thick coat of non-CFC polyurethane foam to trap heat inside the tank, saving energy.

### ¾" TOP WATER CONNECTIONS AND SIDE SPACE HEATING CONNECTIONS

### ½" GAS CONNECTION

### COMBINATION THERMOSTAT/ECO

- Factory-preset pressure regulator and built-in millivolt-powered energy cut-off for overheat protection

### COREGARD™ ANODE ROD

- Our anode rods have a stainless steel core that extends the life of the anode rod allowing superior tank protection far longer than standard anode rods.

### BLUE DIAMOND® GLASS COATING

- Provides superior corrosion resistance compared to industry-standard glass lining.

### ENHANCED BRASS DRAIN VALVE

- All residential water heaters have a solid brass, tamper resistant, enhanced flow, ball type, drain valve.
- Uses a standard female hose fitting that allows for fast and easy draining during maintenance.
- Designed for easy operation, this valve includes an integral screwdriver slot that features a ¼ turn (open/close) radius, which not only permits full straight-through water flow but also a quick and positive shut off.

### CODE COMPLIANCE

- Meets UBC, CEC and HUD National Codes.
- Meets the thermal efficiency and standby loss requirements of the U.S. Department of Energy and current edition of ASHRAE/IESNA 90.1.
- Complies with the Federal Energy Conservation Standards effective April 16, 2015, in accordance with the Energy Policy and Conservation Act (EPCA), as amended.

### CSA CERTIFIED AND ASME RATED T&P RELIEF VALVE

### DESIGNED-LISTEDED BY CSA INTERNATIONAL

- Certified at 300 PSI test pressure and 150 PSI working pressure.
- Listed according to ANSI Z21.10-1- CSA 4.1 standards governing storage tank-type water heaters.

### 6-YEAR LIMITED TANK AND PARTS WARRANTY

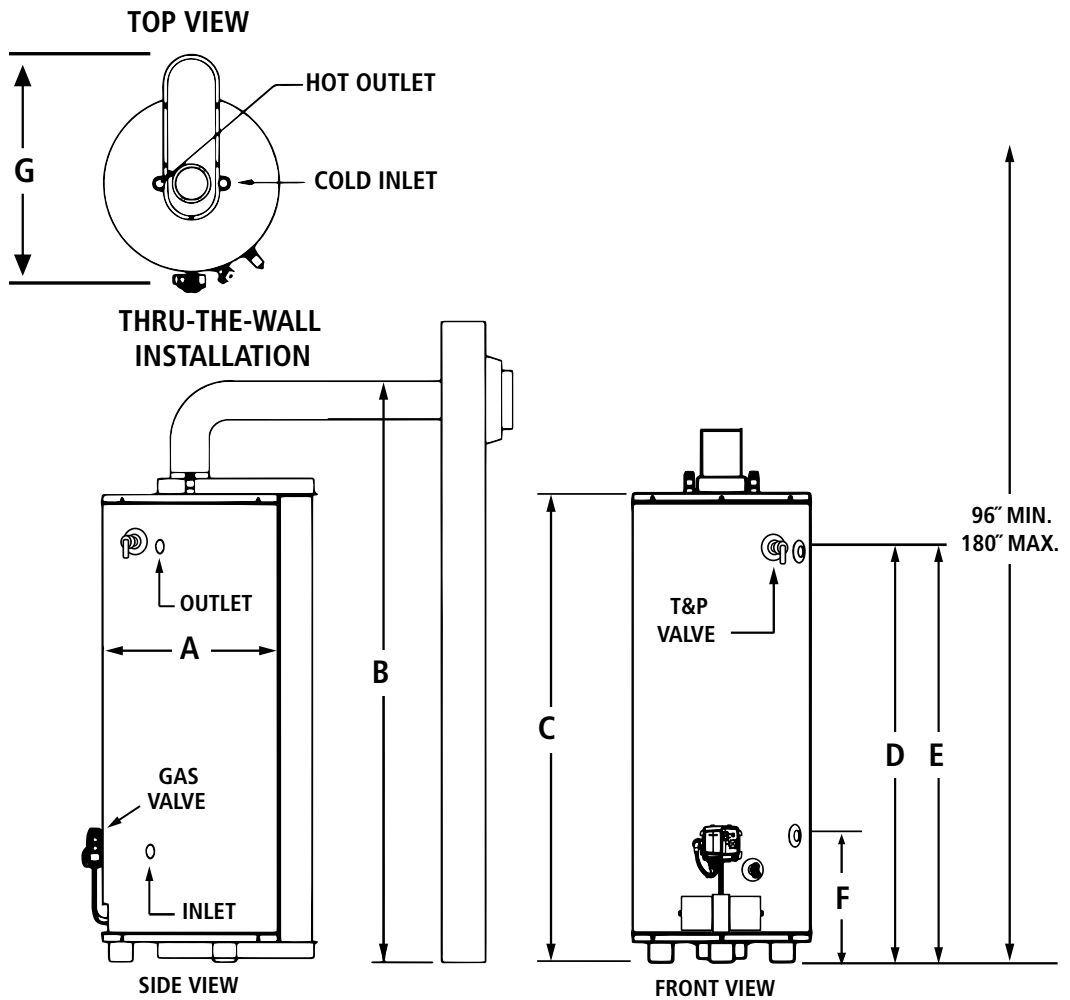
- For complete information, consult written warranty of A. O. Smith Corporation.



Model Number	Gallon Capacity	First Hour Rating Gallon	Energy Factor	Recovery 90°F Rise Gallon Per Hour	BTU Input Per Hour	Concentric Vent Connection	Dimensions in Inches							Approx. Shipping Weight (lbs)
							A	B	C	D	E	F	G	
GDNL-40L-100	40	59	0.62	39	36,000	3 and 5	22	65-1/4	50-1/2	43-7/8	TBD	TBD	27	179
GDNT-50L-100	50	81	0.62	41	38,000	3 and 5	22	73-1/2	58-1/2	52-1/4	TBD	TBD	27	193

No option available for top T&P valve.  
 All models have 3/4" side and top water connections and 1/2" gas connections.  
 Side connections are located on the right side of the heater.  
 Dimensions and specifications are subject to change without notice in accordance with our policy of continuous product improvement.

### PROMAX ULTRA-LOW NOx DIRECT VENT



# ProMax®



### ATMOSPHERIC VENT MOBILE HOME

#### GAS CONTROL CONVERTIBLE FOR NATURAL AND PROPANE GAS

- For flexibility to meet the varying needs of manufactured housing installations.

#### SIDE-MOUNTED 3/4" COLD WATER INLET

- For ease of installation when cold water supply originates below the structure.
- Top mounted 3/4" hot water outlet.

#### GREEN CHOICE® GAS BURNER

- Patented eco-friendly burner design reduces NOx emissions by up to 33% and complies with Low-NOx emission requirements of less than 40 ng/l.

#### COREGARD™ ANODE ROD

- Our anode rods have a stainless steel core that extends the life of the anode rod allowing superior tank protection far longer than standard anode rods.

#### BLUE DIAMOND® GLASS COATING

- Provides superior corrosion resistance compared to industry standard glass lining.

#### ENHANCED FLOW BRASS DRAIN VALVE

- Our residential water heaters have a solid brass, tamper resistant, enhanced flow, ball type, drain valve.
- Uses a standard female hose fitting that allows for fast and easy draining during maintenance.
- Designed for easy operation, this valve includes an integral screwdriver slot that features a 1/4 turn (open/close) radius, which not only permits full straight-through water flow but also a quick and positive shut off.

#### CODE COMPLIANCE

- Meets UBC, CEC and HUD National Codes/
- Meets the thermal efficiency and standby loss requirements of the U.S. Department of Energy and current edition of ASHRAE/IESNA 90.1.
- Complies with the Federal Energy Conservation Standards effective April 16, 2015, in accordance with the Energy Policy and Conservation Act (EPCA), as amended.

#### CSA CERTIFIED AND ASME RATED T&P RELIEF VALVE

#### COMPLIES WITH HUD STANDARDS FOR MANUFACTURED HOUSING INSTALLATION

#### MAXIMUM HYDROSTATIC WORKING PRESSURE 150 PSI

#### DESIGN-LISTED BY CSA INTERNATIONAL

- Certified at 300 PSI test pressure and 150 PSI working pressure.
- Listed according to ANSI Z21.10.1-CSA 4.1 standards governing storage tank-type water heaters.

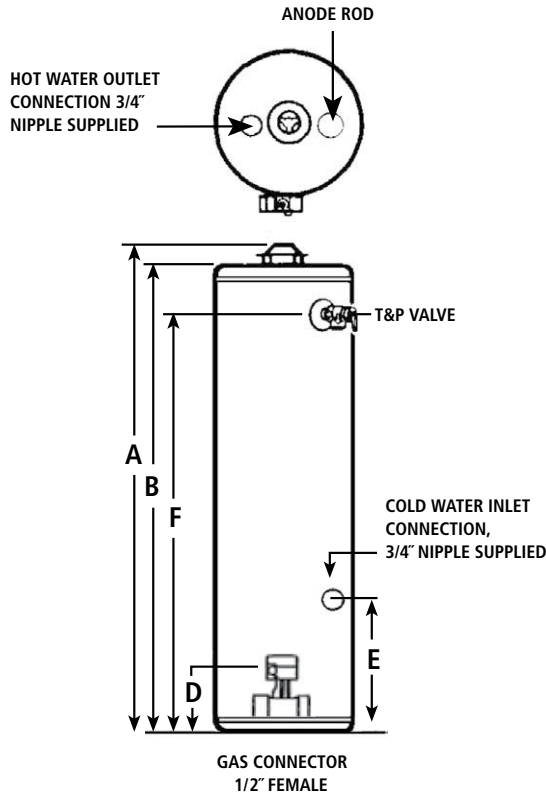
#### 6-YEAR LIMITED TANK AND PARTS WARRANTY

- For complete information, consult written warranty or A. O. Smith.



Model Number	Gallon Capacity	First Hour Rating Gallon	Energy Factor	BTU Input Per Hour Natural Gas	BTU Input Per Hour Propane Gas	Recovery @ 90°F Rise Gallon Per Hour	DIMENSIONS IN INCHES							Draft Hood Outlet	Approx. Shipping Weight (lbs)
							Insulation	A	B	C	D	E	F		
FMHR-30	30	55	0.63	35,500	32,000	36	2	61-1/2	58	18	13	14-1/4	52	3 or 4	129
FMHR-40	40	62	0.62	35,500	32,000	36	2	61-3/4	58-1/4	20	13	14-1/4	51-3/4	3 or 4	153

All models ship from the factory for use with natural gas. A complete propane (LP) burner is supplied for converting to propane gas. All models are certified from sea level to 10,100 ft. elevation. Dimensions and specifications subject to change without notice in accordance with our policy of continuous product improvement.



### ROOF JACK INSTALLATION

This water heater must have a properly-installed draft hood and be connected to a listed roof jack that terminates to the outdoors. The roof jack vent pipe must be secured to the draft hood with sheet metal screws. (Roof jack not furnished.)

The following roof jack models are certified for use with this water heater and are available from your water heater supplier:

Field Controls No. 987 for roof pitch of 5-12 or less:

Kit Number	Maximum Length Between Roof and Ceiling
9002964005	12"
9002965005	32"
9002966005	60"
9002967005	95"

White Metal Products 3RJ for roof pitch of 3-12 or less:

Kit Number	Maximum Length Between Roof and Ceiling
9007941005	14"
9007942005	30"

Install the roof jack according to its manufacturer's instructions.

# ProMax®



### MOBILE HOME DIRECT VENT

#### COMPLIES WITH HUD STANDARDS FOR MANUFACTURED HOUSING INSTALLATION

#### FLAMMABLE VAPOR IGNITION RESISTANT COMPLIANT DESIGN

#### GAS CONTROL CONVERTIBLE FOR NATURAL AND PROPANE GAS

- For flexibility to meet the varying needs of manufactured housing installations.

#### SIDE-MOUNTED 3/4" COLD WATER INLET

- For ease of installation when cold water supply originates below the structure.
- Top mounted 3/4" hot water outlet.

#### DIRECT VENT MODELS PACKAGE WITH BOTTOM INTAKE AIR VENT

- To draw all combustion make-up air from outside the structure.

#### OPTIONAL DUCTED AIR INLET KIT FOR DIRECT VENT MODELS

- For use when water heater is installed over a basement.
- Provision for horizontal air inlet ducting. See instruction manual for approved venting distance by model.

#### GREEN CHOICE® GAS BURNER

- Patented eco-friendly design reduces NOx emissions by up to 33% and complies with Low-NOx emission requirements of less than 40 ng/l.

#### COREGARD™ ANODE ROD

- Our anode rods have a stainless steel core that extends the life of the anode rod allowing superior tank protection far longer than standard anode rods.

#### BLUE DIAMOND® GLASS COATING

- Provides superior corrosion resistance compared to industry standard glass lining.

#### ENHANCED BRASS DRAIN VALVE

- Our residential water heaters have a solid brass, tamper resistant, enhanced flow, ball type, drain valve.
- Uses a standard female hose fitting that allows for fast and easy draining during maintenance.
- Designed for easy operation, this valve includes an integral screwdriver slot that features a 1/4 turn (open/close) radius, which not only permits full straight-through water flow but also a quick and positive shut off.

#### CODE COMPLIANCE

- Meets UBC, CEC and HUD National Codes.
- Meets the thermal efficiency and standby loss requirements of the U.S. Department of Energy and current edition of ASHRAE/IESNA 90.1
- Complies with the Federal Energy Conservation Standards effective April 16, 2015, in accordance with the Energy Policy and Conservation Act (EPCA), as amended.

#### CSA CERTIFIED AND ASME RATED T&P RELIEF VALVE

#### MAXIMUM HYDROSTATIC WORKING PRESSURE 150 PSI

#### DESIGN-LISTED BY CSA INTERNATIONAL

- Certified at 300 PSI test pressure and 150 PSI working pressure.
- Listed according to ANSI Z21.10.1-CSA 4.1 standards governing storage type water heaters.

#### 6-YEAR LIMITED TANK AND PARTS WARRANTY

- For complete information, consult written warranty or A. O. Smith Corporation.



Model Number	Gallon Capacity	First Hour Rating Gallon	Energy Factor	Btu Input Per Hour Natural Gas	Btu Input Per Hour Propane	Recovery @ 90°F Rise Gallon Per Hour	Dimensions in Inches						Draft Hood Outlet	Approx. Shipping Weight (lbs)	
							Insulation (Inches)	A	B	C	D	E			F
FMDV-30	30	49	0.63	30,000	29,000	31	2	61	58	18	13	14-1/4	52-1/2	3	129
FMDV-40	40	61	0.62	32,000	29,000	33	2	61-3/4	58-3/4	20	13	14-1/4	52-1/4	3	153
FMDV-50	50	77	0.60	40,000	37,000	39	2	60	57	22	13	14-1/4	50	3	168

Recovery capacity based on actual performance tests.

All models ship from the factory for use with natural gas, a complete propane burner is supplied for converting to propane gas.

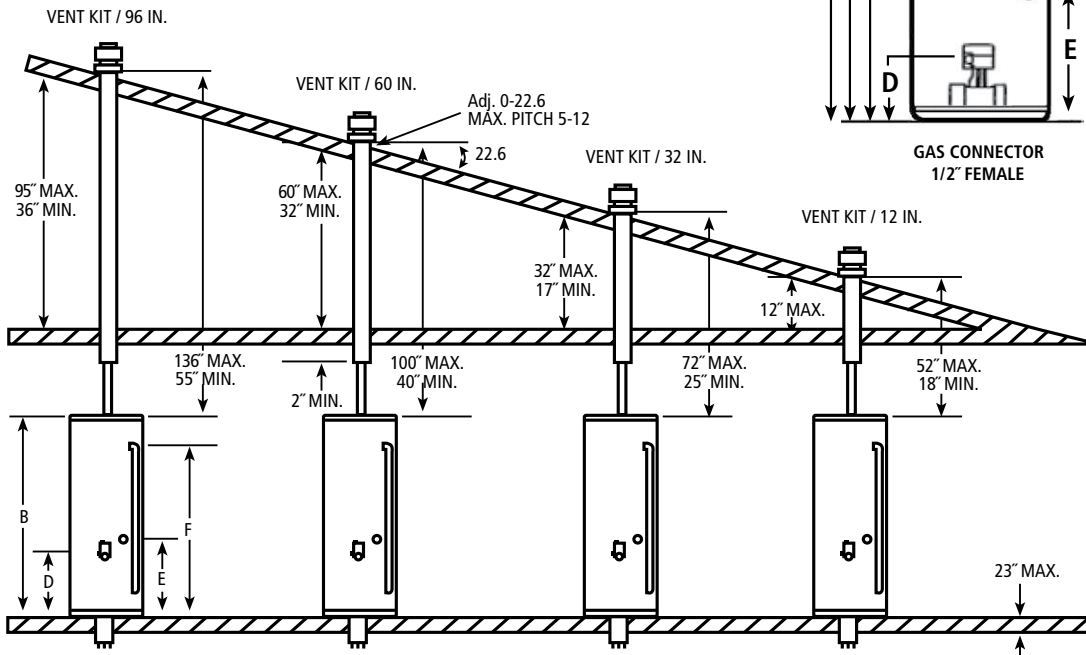
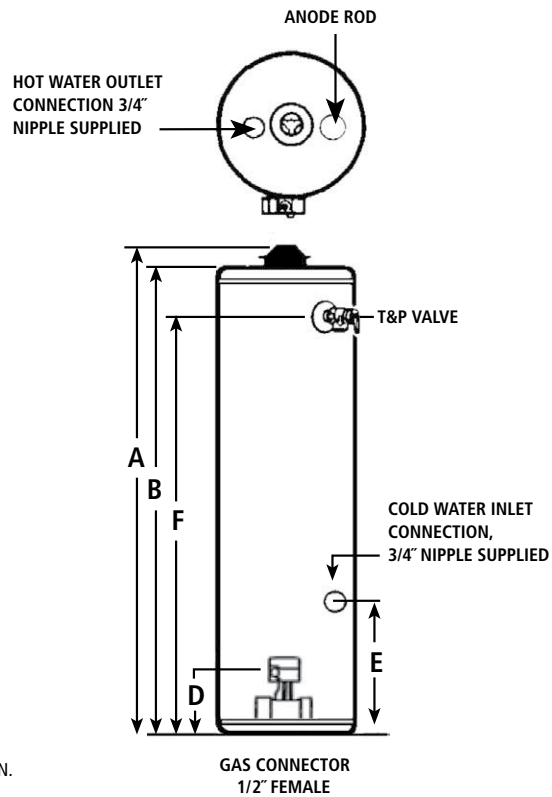
Water connections-3/4" on all models. All models approved for installation from sea level to 5,400 ft. elevation.

Dimensions and specifications subject to change without notice, in accordance with our policy of continuous product improvement.

Kit Number	MIN.	MAX.	Approx. Shipping Weight (lbs)
9002964005	-	12"	10
9002965005	18"	32"	13
9002966005	32"	60"	22
9002967005	36"	95"	27

### APPROVED ROOF JACK KITS

Direct Vent mobile home water heaters must be installed using one of these approved Roof Jack Kits, which must be ordered separately. "Min." and "Max." dimensions indicate kit adjustability for varying vent distance, as shown in drawing.



For technical information and automated fax service, call 800-527-1953. A. O. Smith Corporation reserves the right to make product changes or improvements without prior notice.